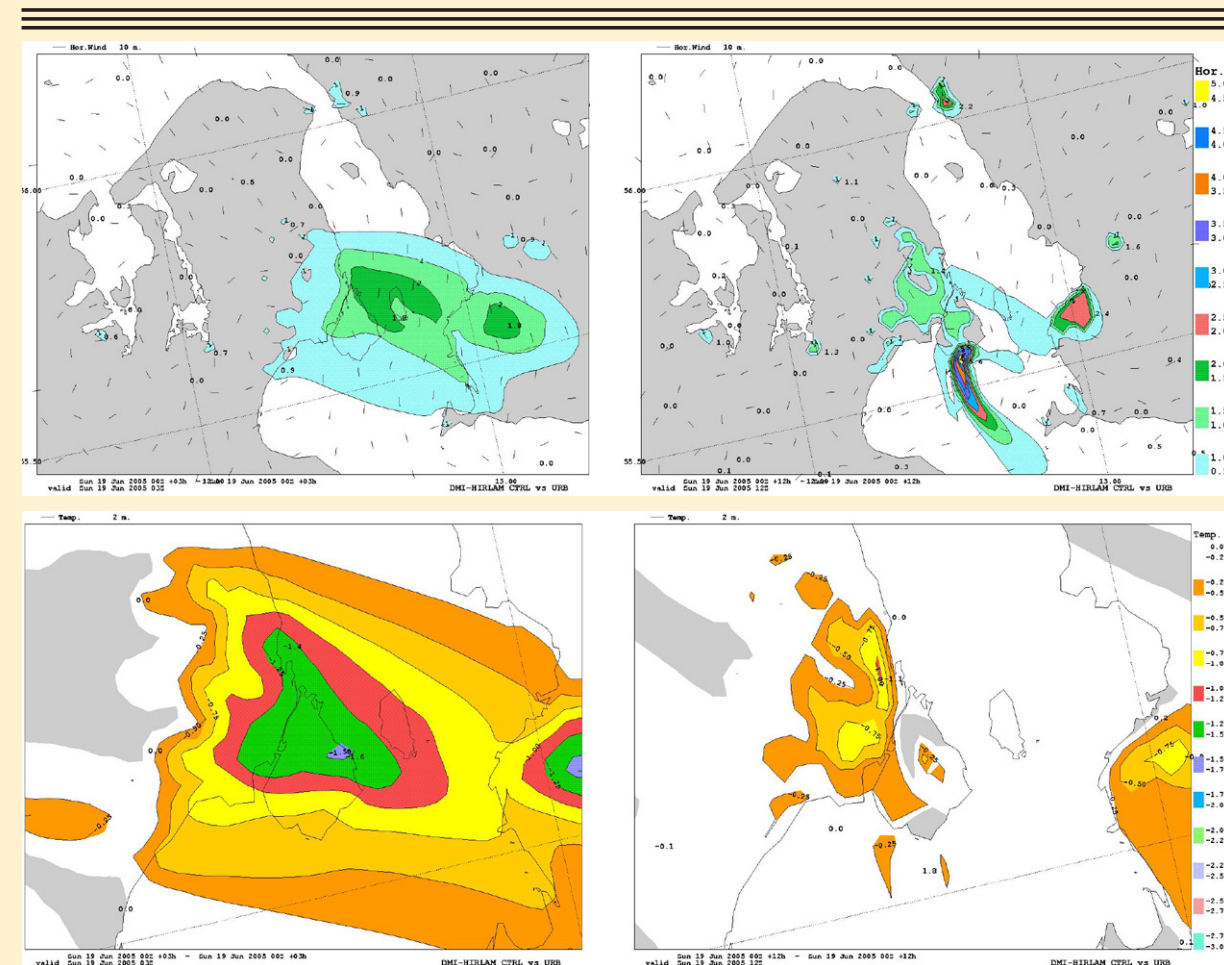


Contents

| | |
|--|----|
| Introduction, Jeanette Onvlee..... | 1 |
| Climatological background error standard deviations in screening and minimization, Magnus Lindskog and Jana Sanchez | 3 |
| The use of VAD winds at INM, Maria Diez | 8 |
| Intercomparison of STRACO and KF-RK, Sander Tijm | 13 |
| On the Kain-Fritsch convective parameterization in HIRLAM: going towards higher resolution, Lisa Bengtsson and Javier Calvo | 25 |
| Overall tuning of the turbulence scheme of HIRLAM with the focus on the stable boundary layer, Cisco de Bruijn en Sander Tijm | 32 |
| Note on comparisons of MSO-SSO parametrizations in the “newsnow” framework, Laura Rontu..... | 37 |
| Sensitivity of HIRLAM forecasts to the surface description over Tanzania – first experiences of ECOCLIMAP, Hamza Kabelwa, Laura Rontu and Katharina Kourzeneva | 41 |
| Verification of long-term DMI-HIRLAM NWP model runs using urbanization and building effect parametrization modules, Alexander Mahura, Claus Petersen, Alexander Baklanov, Bjarne Amstrup, Ulrik. Korsholm, Kai Sattler | 50 |
| Plan for research in lateral boundary conditions, Aidan McDonald, Piet Termonia and Fabrice Voitus | 61 |
| Integrated Meteorological and Atmospheric Chemical Transport Modeling: Perspectives and Strategy for HIRLAM/HARMONIE, Alexander Baklanov | 68 |
| Daily air quality forecasts, experiences with CHIMERE interfacing to HIRLAM data, Gertie Geertsema, Suzanne Calabretta-Jongen and Henk Eskes | 79 |
| Report on HIRLAM management group visit to DMI, Jeanette Onvlee | 87 |
| Status of the HIRLAM Reference System, Xiaohua Yang | 91 |



NEWSLETTER
No. 53, March 2008



Effect of urban parametrizations in DMI-HIRLAM for a low wind conditions case: difference plots (between outputs of the DMI-HIRLAM vs. DMI-HIRLAM+Urb) for the wind velocity at 10 m (upper panels) and air temperature at 2 m (lower panels) at 03 UTC (left panels) and 12 UTC (right panels) on 19 June 2005.